



MUX 2/4/8/16

Multiplexers for measurement instruments up to 16 inputs





This range offers the possibility to connect most of the control instruments of the market (micrometers, calipers, weight scale etc...) and is divided into 4 products for connecting respectively 2, 4, 8 or 16 instruments on a PC.

Our instrument's multiplexers «MUX» are delivered with a PC software that allows to get the data into a PC

Connection possible with the following instruments (but not limited to):

- Digimatic : Mitutoyo, Mahr
- Opto RS232 Sylvac, Tesa, Bowers etc...
- RS232
- Analogue output, single or bipolar, in current or in voltage...



Main characteristics

- 1 RS232 port for a connection to a PC
- 2 to 16 inputs for measuring instruments
- 1 input for external command (footswitch)
- Storage temperature -40 °C to +70 °C.
- Operating temperature : +5°C to +40°C.
- Power supply 235 V Consumption : 2 VA
- Dimensions:
 - Mux2 = L 57 mm, W 68 mm, H 35 mm.
 - Mux4 = L 106 mm, W 68 mm, H 35 mm.
 - Mux8 = L 106 mm, W 68 mm, H 44 mm.
 - Mux16 = L 106 mm, W 65 mm, H 35 mm.

Connection

Intelligent cables make possible the connection of a large range of measuring instruments :

- Mitutoyo and Mahr instruments are connected to the MUX4 through their original cable.(Digimatic)
- Opto RS232 duplex instruments(Ex: Sylvac, Tesa, ...) are connected through a cable ref 18010
- Instruments having a RS232 output are connected with the cable ref 18100. This cable can be delivered ready to use or easily configured by the user in order to fulfill each particular need thanks to the MuxConfig software.
- Instruments equipped with an analogue output in voltage or current are connected with the cable ref 189xx : $\pm 5V$, $\pm 10V$, $0-5V$, $0-10V$, $4-20mA$, $\pm 20mA$, $0-20mA$.

Operating modes

Two operating modes are available:

- Multiplexed mode: All the channels are active simultaneously. The transfer is made upon request from the PC or through the instrument transfer button.
- Addressed mode: Only one channel is active (the addressed one). The transfer is made upon request from the PC or through the instrument transfer button or through a footswitch connected to the Mux4.

Instrument reading

There are 3 ways to read your measuring instrument :

- By using a software request received on the communication port (USB or RS 232).
- By using a footswitch connected to the MUX4
- By using the tranfert button of the instrument

This configuration enable to the PC de get the measurements taken from different instruments. The Winmux software allows to bring direty the data into a spreadsheet software (Excel, Open-office etc...).

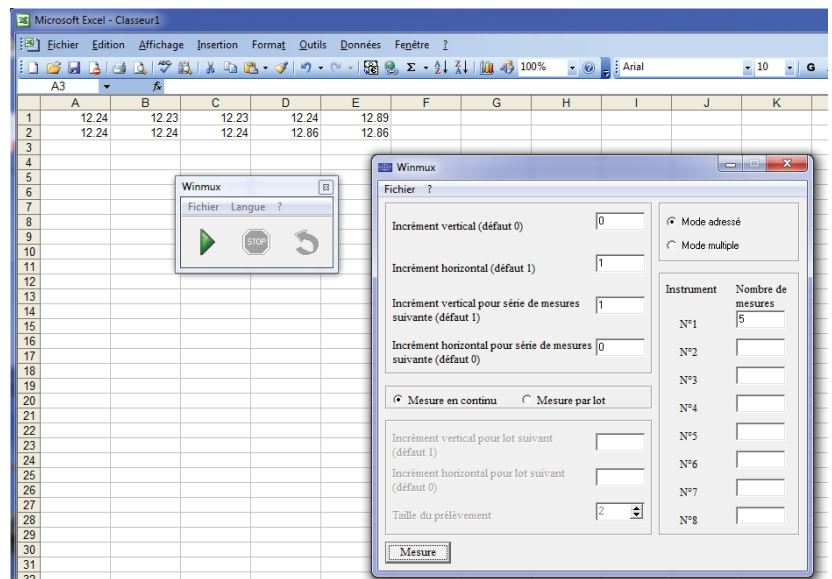
Winmux

Winmux is a free software that can be downloaded in from our website www.metro-fr.com.

Winmux allows to bring the measurements realized trough our Multiplexers for instruments (MUX family) directly in the selected cells of an Excel spreadsheet

- Number of channel of the multiplexer
- Number of instrument connected
- Number of measurement characteristics to read on each instrument
- Target cell for the first measurement.
- Horizontal and vertical increment between measurement
- Horizontal and vertical increment between sampling

Winmux is compatible with the spreadsheet softwares (Excel, Open-office etc...) or more recent.

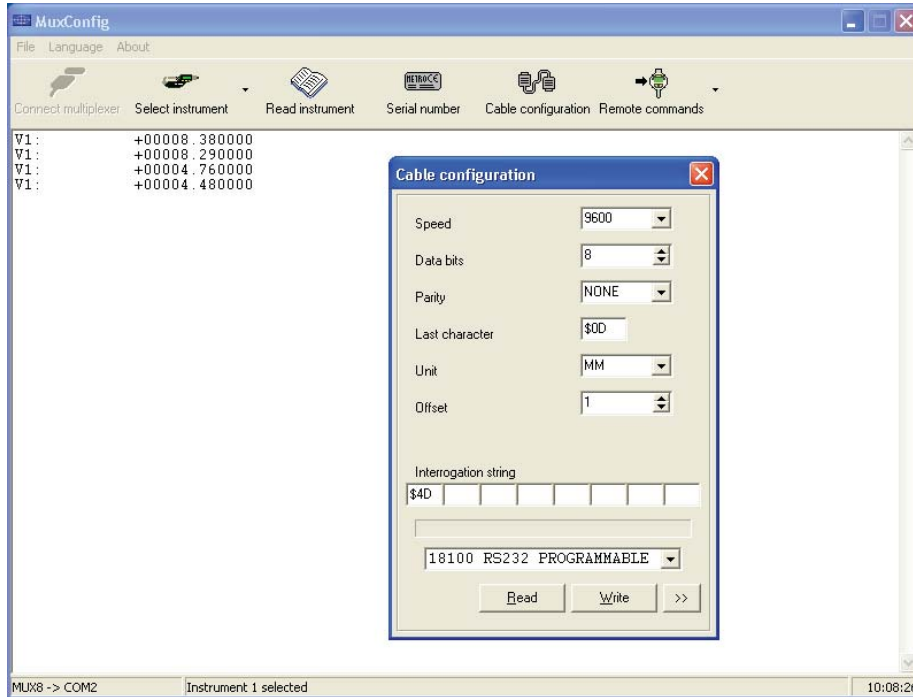


Muxconfig

Muxconfig is a utility software that allows to

- Test the MUX multiplexers
- Configure the instruments cables ref. 181xx or 189xx

Muxconfig is free and can be download from our website www.metro-fr.com



References

Item	Reference
Mux2 with USB port a 2m cable	18012
Mux4 with RS232 port	18004
Mux8 with RS232 port	18008
Mux16 with RS232 port	18016
Cable between Mux and Opto RS232 instruments	18010
Configurable cable between Mux and instruments (RS232)	18100
Footswitch	18020
RS 232/485 cable for communication with PC	18060
Winmux software	18030
Power supply adaptor 230VAC for Mux2	18040
Ready to use cables between MUX2 and RS232 instruments	On demand
Analogue instrument cable	On demand



Metro
Rue de la Jonchère
74420 Boège
France
Phone. +33(0)4-50-39-08-49
Fax. +33(0)4-50-39-08-33
E-mail : info@metro-fr.com
Web : <http://www.metro-fr.com>

Your distributor

MXENI000212

This document is not contractual and contains information corresponding to the level of technology at the date of printing. Metro reserves the right to modify and/or improve the product, whose characteristics are described in these documents, as required by new technology at any time. It is the purchaser's responsibility to inform himself, no matter what the circumstances, of the product's maintenance conditions and requirements. Metro reserves all rights, especially those arising from our "General Delivery Conditions".