



MicroVision

Electronic comparator for gauging probes





The electronic comparator MicroVision is designed to realize dimensional control from 1 to 31 probes.

The MicroVision is universal (different probe's technologies supported) and powerful (up to 50 measurement characteristics, etc)



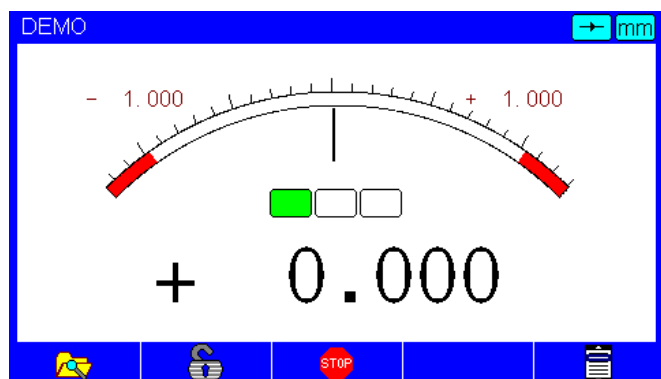
Thanks to its intuitive menus and its general simplicity the MicroVision is a device that will be immediately adopted by every operator.

Graphic color display

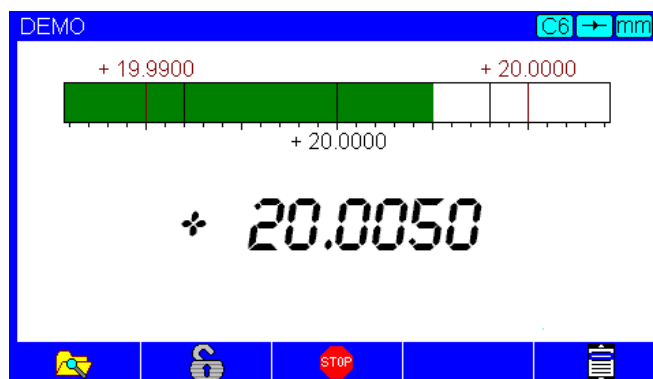
The electronic comparator MicroVision is equipped with a 4.3" TFT color display which allows an easy configuration thanks to its drop down menus, its icons and functions buttons.

The measurement is displayed digitally and with 2 types of bargraph.

3 colored indicators or an analogue display indicates the measurement against the tolerances limits.



«dial gauge» display type



«bargraph» display type

CH1	
Definition	Characteristic
Characteristic	Upper tol. 1.000
Calculation	Upper limit 0.800
Calibration	Master 0.000
Measure trigger	Nominal 0.000
Classification	Lower limit -0.800
Communication	Lower tol. -1.000
Configuration	
Adjustment	
Protection	

Configuration screen

CH1	
Functions :	Explorer
1:Copy	01:CH1
2:Paste	02:CH2
3:Delete	03:
	04:
	05:
	06:
	07:
	08:
	09:
	10:

Measurement catalogue

Compatible probes

One of the advantage of the Microvision is its compatibility with different technologies of probe :

- Inductive (Metro, Tesa compatible , Mahr)
- Incremental linear encoders (Metro, Heidenhain)
- Digital (Metro)

Thanks to its M-bus connector it is possible to connect probes extension's boxes and to mix different technologies of probes (see M-bus description on page 4)

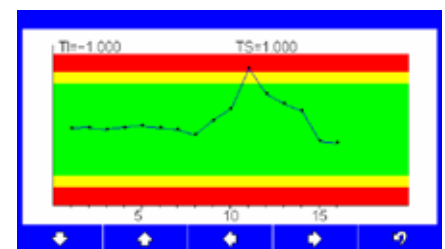
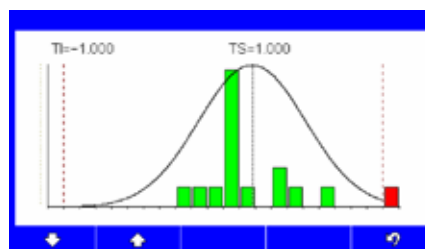
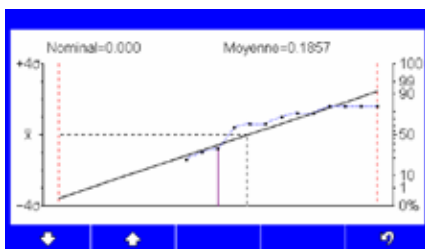
Functions

Many functions can be selected with the keyboard or by remote control through the RS 232 port:

- Nominal dimension, tolerance limits , dimension of the master part (reference piece)
- Calculation formula
- Possibility to store up to 10'000 measurements
- Calibration mode and calibration checking
- Duration of validity of the calibration
- Keyboard locking
- Measuring mode (maxi-mini, maxi, mini, average, median).
- Display resolution (2 to 5 decimals)
- Metric or imperial measurements (mm or inches)
- Measurement hold
- Choice between 50 measurement configurations (50 characteristics)
- Sorting of the dimension up to 8 classes
- Automatic change of measurement characteristic by moving a probe
- Measurement on a «V type» setup (calibration with a min and max master part)
- Different languages installed. New languages can be installed upon request

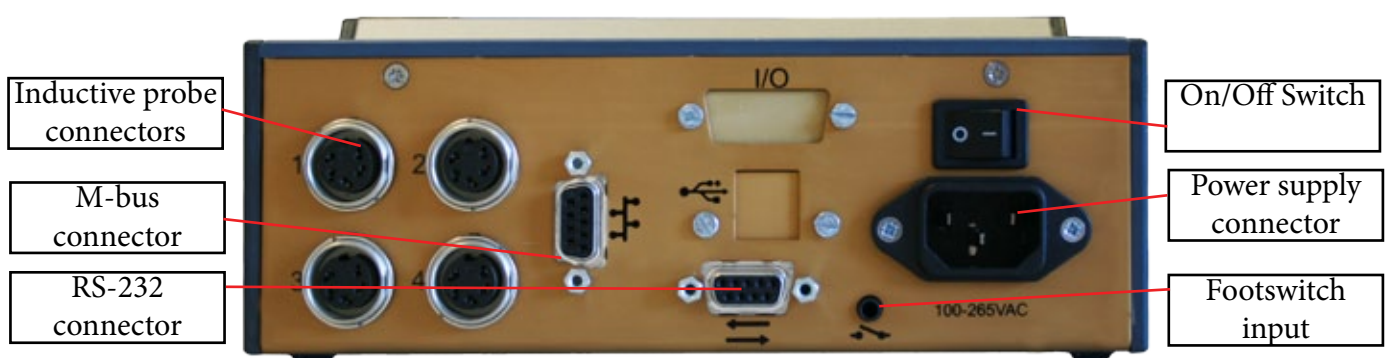
Statistic module

An optionnal function allows to store up to 10'000 measurements thru a keyboard command or by a footswitch action. Then several statistic screens are available : histograms with Gauss curve, probability plots, Individual and Moving Range, Max, Min, Mean, Standard Deviation, Cm, Cmk...)

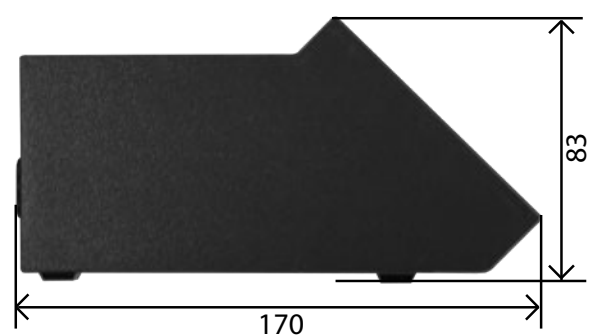
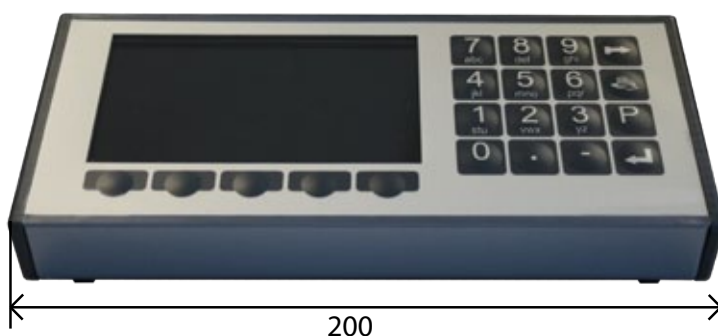


Rear view example

Several versions for different technologies of probes are available. The picture below is an example of rear view with the connection facility for 4 inductive probes and 1 M-bus extension.



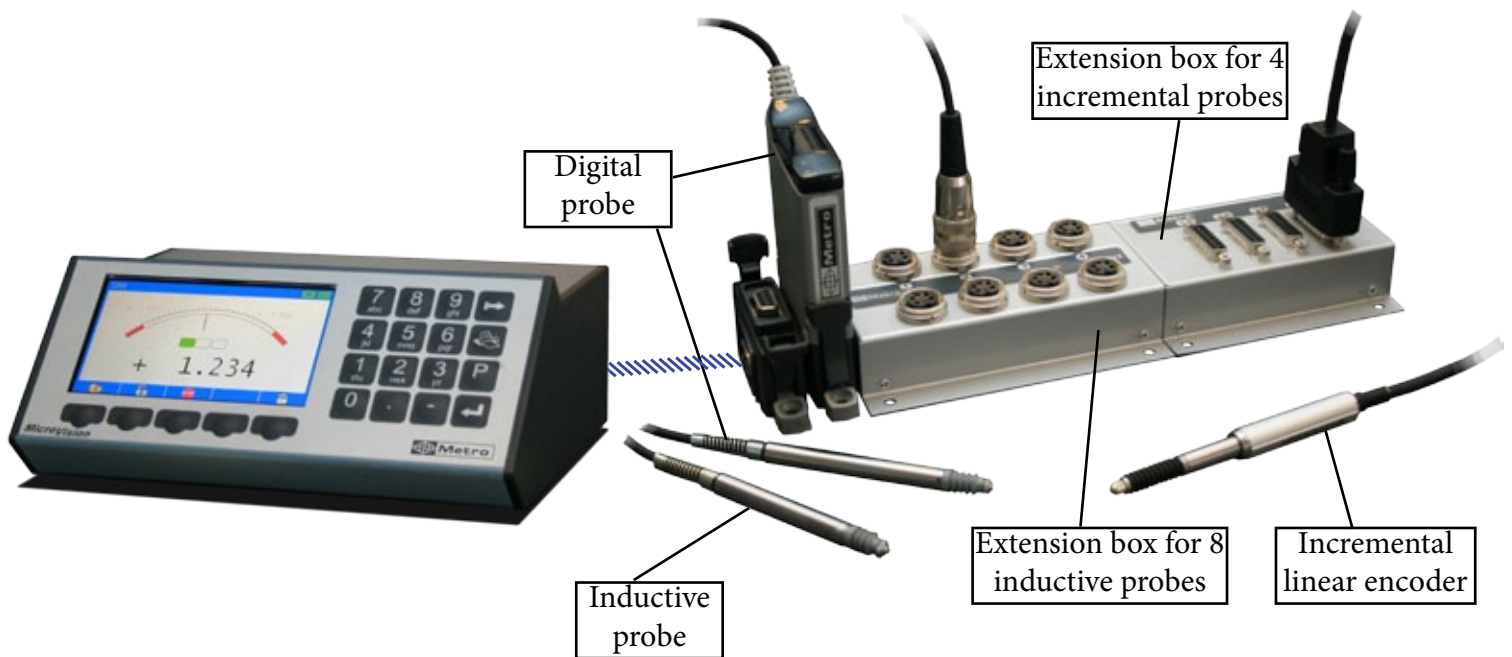
Mechanical dimensions



The M-bus network

The M-bus network has been developed in order to link easily probes and interfaces to measuring devices. This system brings the following improvements :

- The display unit receives digital data from the probes. The transmitted signal is therefore no anymore damaged by the cable length. The digital data are the same not depending of the probe's technology used (inductive, linear encoder...). The display unit is not anymore dedicated to a single technology of probe and it is therefore possible to choose the most adapted technology depending on each measuring case.
- A single cable is used to connect all the probes to the display unit, this greatly simplify the wiring.
- Capacity of 31 probes for the Microvision
- The M-bus network is able to receive probes individually as well as multi-probes systems.



Example of M-bus configuration

Product references

Item	Reference
MicroVision for 2 M-Bus probes(extensible to 31)	25000
MicroVision for 4 inductive probes and M-bus extension	25010
MicroVision for 2 Heidenhain linear encoders (TTL / SubD15) and M-Bus extension	25020
MicroVision for 2 Heidenhain linear encoders (11µA / M23) and M-Bus extension	25050
MicroVision for 2 Heidenhain linear encoders (11µA & 1VPP / SubD15) and M-Bus extension	25060
Optional I/O card	25100



Metro
Rue de la Jonchère
74420 Boège
France

Phone. +33(0)4-50-39-08-49
Fax. +33(0)4-50-39-08-33
E-mail : info@metro-fr.com
Web : <http://www.metro-fr.com>

Your distributor

UVEN1000612

This document is not contractual and contains information corresponding to the level of technology at the date of printing. Metro reserves the right to modify and/or improve the product, whose characteristics are described in these documents, as required by new technology at any time. It is the purchaser's responsibility to inform himself, no matter what the circumstances, of the product's maintenance conditions and requirements. Metro reserves all rights, especially those arising from our "General Delivery Conditions".